

Solar heated shower

DOCCIA-GRU - SS0905

Operating and Maintenance Instructions



The photo is only indicative. The actual product color may appear slightly different.

Thank you for purchasing this MPC product. We are constantly improving our products. However, in case this product has any defects, we apologize and please contact our customer service.

USER AND MAINTENANCE MANUAL

This manual is an integral part of the product you have purchased. It contains important information for the installation and use of the product. Read all instructions, especially the safety precautions, before using this product. Failure to follow the instructions and warnings may result in serious personal injury and product damage. The instructions provided are based on the standards and regulations valid in the European Union. For other countries, follow the specific regulations. Keep the instructions for future reference and pass them on to others.

DESIGNATED USE

This Solar heated shower model is recommended for family use.

A solar shower is designed to be used outdoors only. Use this product only as described in the instructions. Any other use may cause damage to property or even personal injury. This product is not a toy. The manufacturer or the seller shall not be liable for any damage resulting from improper use or use not in accordance with the stated purpose.

Safety warnings

Carefully read and follow all warnings and instructions. Failure to follow them can result in property damage, serious injury or even death. These warnings, instructions, and product safety guidelines cover many, but not all, of the possible hazards and risks. Use caution and assess all hazardous situations correctly. Failure to operate this product properly may result in death or serious injury.

Caution! All repairs must be performed by qualified personnel only to avoid possible hazards. If necessary, contact a qualified technician. In the event of self-initiated repairs, improper installation or misuse, liability and warranty claims will be voided. Only spare parts that correspond to the original product data may be used for repairs.

WARNING! Hazards for children and persons with reduced physical, sensory or mental capabilities, or lack of experience and knowledge: Children should not play with this product. Cleaning should not be carried out by children or persons with reduced physical, sensory or mental capabilities.

NOTE: Risk of damage! The product can be damaged by improper use.

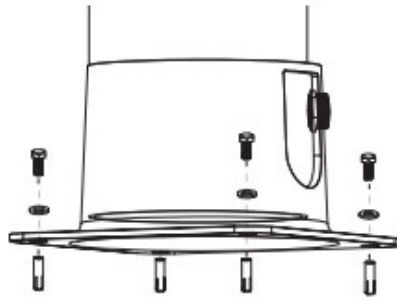
Content Control

WARNING! Risk of damage to the product! If the packaging is opened with a sharp knife or other sharp tool without proper care, the contents may be damaged. Therefore, be careful when opening the packaging:

- Take the product out of the package
- Check the contents of the package

- Check that the product and its own parts are undamaged. If this is not the case, do not use the product and contact the seller immediately.

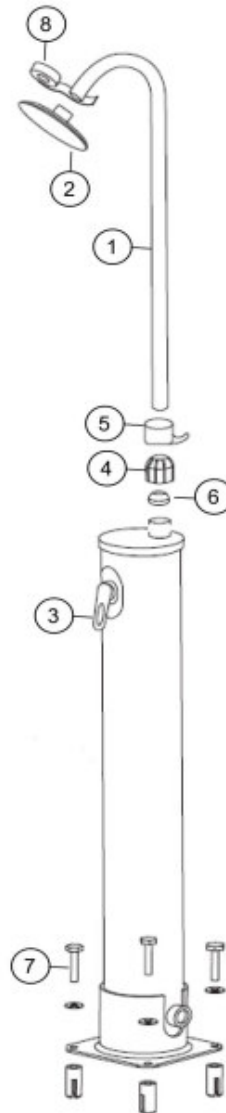
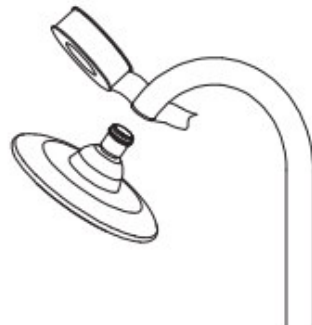
1.



2.



3.



01: 049900
02: 049901
03: 049902
04: 049903
05: 049904
06: 049905
07: 049906
08: 049908

Define the installation location

To ensure the best possible stability and your safety, the solar shower must be installed on a stable surface. Place the shower in a sunny location taking care that the back of the shower is exposed to the sun and facing south if possible. Do not lean the shower against a wall or anything else that blocks sunlight. Installation must be done by qualified personnel.

Installation

- 1) It is recommended that the outdoor solar shower has to be installed on a solid surface for stability and safety.
- 2) When using the tools, be careful not to damage the chrome and other parts of the shower.
- 3) SOLAR SHOWER INSTALLATION: Install solar shower ONLY on a CONCRETE/MURAL base.
 - Choose a place for the shower that is more exposed to direct sunlight.
 - Use the PVC base plate/pipe to mark the location of the fastener holes to be drilled in the concrete/masonry for the screws (Fig. 1).
 - Remove the shower section. Using the marks made, drill holes 12 mm (0.47") in diameter and 45 mm (1.77") deep.
 - Insert the expansion dowels into the drilled holes. Insert the bolt into the expansion dowel and tap with a hammer to slightly widen the dowel.
 - Remove the screw and place the base plate/pipe over the holes and secure it to the surface with the screws and washers provided

NOTE: The base will appear loose as long as the shower is fully secured to the surface.

- 4) Damage caused by incorrect assembly is not covered by warranty.

Shower assembly

1. Attach the locking nut and gasket to the stainless steel pipe, then insert it into the opening at the top of the PVC pipe (Fig. 2). Tighten the locking nut securely while properly aligning the shower head. Make sure the stainless steel pipe rests on the underside of the bracket.
Engage the hook on the locking nut, this is used for hanging towels etc.
2. Wrap the remaining end of the stainless steel pipe thread 16 to 20 times with Teflon tape. Then install the shower head /fig. 3).
3. Before connecting the water hose to the shower, purge the pipework by running the water for at least 5 minutes to remove any debris that may be in the pipes. Ensure that only clean water comes out without any residue.
4. Connect the water hose to the shower. Check that the inlet tap is open. Set the shower mixer to "hot" and let the water flow into the shower: this prevents air bubbles from forming in the tank.
5. The maximum operating pressure of the solar shower is 3 bar.

NOTE: Check that the hose is securely positioned to avoid tripping hazards.

NOTE: Make sure the stainless steel tubes are securely tightened in the correct position.

First start-up

Before connecting the water hose to the shower, purge the pipe by running the water for at least 5 minutes to remove any debris that may be in the pipes. Make sure only clean water comes out with no debris.

1. Connect the water hose to the shower. Make sure the inlet faucet is open. Turn the shower faucet to "hot" and let the water flow into the shower: this will prevent air bubbles from forming in the tank.
2. It takes approx. 4-6 minutes to fill the tank. When the water flows evenly and smoothly out of the overhead shower, close the mixer with the lever in the middle - the tank is now completely full.

Attention: The water supply must be open for the shower to work!

This procedure is only necessary for initial start-up.

3. The shower is ready to absorb sunlight and heat the water in the black solar tank.

NOTE: The water heating time depends on the outside temperature and the quantity of sunlight! Wind can also affect water heating.

Starting the shower

The maximum operating pressure of the shower is 3 bar. Connect the garden hose to the water inlet of the shower. Make sure the hose is properly secured.

Use

Warning: Solar radiation causes the water in the solar tank to become very hot. We therefore recommend that you always set the cold/hot mixer to the middle position (between hot and cold) before opening the tap and running the water.

Then adjust the desired temperature by turning the mixer lever to the right (hot water) or left (cold water).

- 1) Turn the mixer to the "ON" position to enjoy a hot shower with water heated by the sun.

Attention: the water supply must be open for the shower to work!

- Hot water flow rate: 10.3 l/min.
- Cold water flow rate: 10.9 l/min.

- 2) When you have finished using it, turn off the shower water supply.

If you are not going to use the shower for 24 hours or more, let the water run for at least 2 minutes before using the shower so that the water in the solar reservoir can be completely replaced. In hot environments, standing water may cause pathogenic bacteria to multiply.

WARNING! Water once contained in the tank is no longer considered drinking water!

If you do not plan to use the shower for several days, we recommend closing the inlet faucet and emptying the shower by turning the mixer lever to the HOT position and opening the cap at the bottom. Before covering the shower with the special protection bag, make sure that the surface of the shower is perfectly dry.

Important Warnings

- Never have a shower during a rainstorm.
- Solar radiation causes the water in the solar tank to become hot. We therefore recommend that you always set the mixer to the middle position (between hot and cold). Then set the desired temperature.
- If you are not going to use the shower for 24 hours or more, let the water run for at least 2 minutes so that the water in the solar tank is completely replaced. In hot environments, standing water may cause pathogenic bacteria to multiply.
- The water in the tank is no longer considered drinking water!
- **Water leaking from the shower head after turning off the shower faucet is not a defect but a technical requirement!**

A solar shower is not a closed system. If there is a demand for hot water, cold water enters the tank from below through the valve pushing out the hot water already in the top of the tank.
The entire shower body is filled with water and acts as a solar heater.
The pressure that builds up as a result of heating can leak out of the showerhead.

CAUTION: The showerhead contains a filter that must be cleaned regularly. Otherwise, the water pressure may increase too much and the water tank may burst.

Disassembly at the end of the season

During the winter period, the shower must be COMPLETELY drained of its water content. Also during the winter the shower must be disassembled and stored in a dry place.

Failure to observe this warning may result in frost damage to the product.

Frost damage is not covered by warranty.

- 1) Close the shower and remove the garden hose.
- 2) To drain the shower, turn the mixer back to the "HOT" position (approx. 2 minutes) and open the drain plug.
- 3) Unscrew the locking nut counterclockwise and detach the steel tube.
- 4) Unscrew the PVC pipe of the shower and drain the remaining water (absolutely necessary!).
- 5) Clean and dry the shower carefully the shower before storing it.

Cleaning

DO NOT USE SALT OR ANTIFREEZE IN WATER TO PREVENT FREEZING. THIS WILL VOID THE PRODUCT WARRANTY.

Use commercially available cleaners for cleaning. Do not use cleaning agents containing solvents, abrasive cleaners or hard sponges, brushes, etc.

Warranty

The provisions in force in the European Community apply.

SINED showers are guaranteed for 2 years from the date of purchase for defects in materials and production. Excluded from the warranty are components subject to wear and tear including mixers, shower heads, faucets, etc..

- The warranty does not cover damage due to incorrect assembly, improper use and incorrect maintenance (e.g. use of inappropriate cleaning agents).
- The warranty does not cover damage caused by the use of non-original spare parts.
- The warranty does not cover damage resulting from work not carried out by qualified technicians.
- The warranty does not cover damage caused by frost, limescale or other impurities in the shower.

In case of problems covered by the warranty, the product must be returned to the seller.

- The product must be carefully packed and complete with all its parts and accessories;
- The reason for return must be described in detail and proof of purchase (invoice or receipt) must be provided;
- Return shipping costs are charged to the buyer;
- The returned product will be checked by the seller and repaired or replaced at the sole discretion of the seller.

Manufacturing: Starmatrix Group Inc.

Address: 253 Mengxi Road

Zhenjiang, Jiangsu, CHINA

Made in China Imported in Italy by M.P.C. srl Via Tortona 21 -20144 Milano Italy Tel +39 02 21117815 e-mail info@mpcshop.it web site www.mpcshop.it